



INTERNATIONAL ELECTROTECHNICAL COMMISSION SYSTEM FOR CERTIFICATION TO STANDARDS RELATING TO EQUIPMENT FOR USE IN EXPLOSIVE ATMOSPHERES (IECEX SYSTEM)

**Title: Vote on the acceptance of the new UL cooperation arrangements of
ExCB and ExTL and Additional Testing Facilities**

Circulated to: IECEX Management Committee, ExMC

INTRODUCTION

While *IECEX 02 - IECEX Certified Equipment Scheme covering equipment for use in explosive atmospheres – Rules of Procedure*, provide for an Accepted ExTL to co-operate with more than one Accepted ExCB, each arrangement must be approved by the IECEX Management Committee, ExMC.

UL operates within the IECEX 02 Certified Equipment Scheme via the following three IECEX approved Certification Bodies, ExCBs:

- UL LLC, Northbrook, IL USA [ExCB+ExTL since 2002]
- UL International Demko, Ballerup, Denmark [ExCB+ExTL since 2002]
- UL do Brasil, Sao Paulo, Brazil [ExCB since 2016]

While UL LLC as an ExCB and an ExTL, cooperates with other UL entities in Denmark, Brazil, Germany and Chinese Taipei, all of which are covered by Assessment reports approved by the ExMC, UL requests acceptance of a slight change of cooperation arrangements among these bodies.

The new cooperation arrangements is shown in **Figure 1**, attached and shows three levels in the arrangements of the three abovementioned ExCBs located in USA, Denmark and Brazil being supported by a single ExTL, being UL, LLC in Northbrook USA.

The ExTL located in Northbrook USA is to work with five separate “Additional Testing Facilities”, ATFs, according to IECEX 02 Rules. Currently four of them have been accepted and are already operating under the control of UL LLC as ExTL.

The co-operation sought under this new arrangement is within the existing approved scope of each of the bodies as previously approved by the IECEX Management Committee, ExMC for operating in the IECEX 02 Certified equipment Scheme.

While all bodies concerned have been previously assessed and accepted by the ExMC and that there is no change in scope of the bodies being sought, a separate site assessment visit is not deemed necessary as each body will continue with the current surveillance, mid term and 5 year re-assessment schedules.

However as part of the application and prior to submission to ExMC for acceptance of the new cooperation arrangement, the Secretariat has undertaken a thorough review of the structural elements to support this cooperation, including reviews of agreements among the bodies and also review of UL internal operating procedures and document management controls to confirm that the new structure and controls for the work flow are in line with the IECEX 02 rules and supporting Operational Documents and has concluded that IECEX Scheme rules and requirements continue to be met.



As part of this review the Secretariat has referred back to previous IECEx Assessor reports and provides **Table 1** as a summary of the IECEx history and most recent assessments reports that exist and have been approved previously by ExMC. This review confirms that all bodies concerned in this new structure are not over due for any assessments nor have any outstanding assessment issues.

The review was undertaken by Chris Agius of the Secretariat, an IECEx Lead Assessor, with his work reviewed and endorsed by the IECEx Chair.

It is noted that the ATF identified as Labelo in Brazil, is an applicant ATF and will not be included until the final assessment report is accepted by ExMC. It is shown in Figure 1 for information purposes.

The IECEx Management Committee is requested to vote on the revised co-operation arrangements as per **Figure 1**, attached.

For the purpose of Figure 1 and Table 1 below, the following abbreviations apply:

ExCB – IECEx Accepted certification Body under the IECEx 02 Certified Equipment Scheme

ExTL – IECEx Accepted Testing Laboratory under the IECEx 02 Certified Equipment Scheme

ATF – Additional Testing Facilities under the IECEx 02 Certified Equipment Scheme

This document is hereby submitted for ExMC approval via correspondence using the IECEx on-line voting system. ExMC Members are requested to submit their vote via the IECEx On-line Ballot System by the closing date 2019 04 25.

Please refer to OD 050 for guidance on the “IECEx On-line voting system.”

Alternatively, please contact me if you have if you have any questions.

Chris Agius

IECEx Secretariat

Address:
Level 33, Australia Square
264 George Street
Sydney NSW 2000
Australia

Contact Details:
Tel: +61 2 46 28 4690
Fax: +61 2 46 27 5285
e-mail: info@iecex.com
<http://www.iecex.com>

**Figure 1. Revised UL Cooperation structure within IECEx
02 Certified Equipment Scheme**

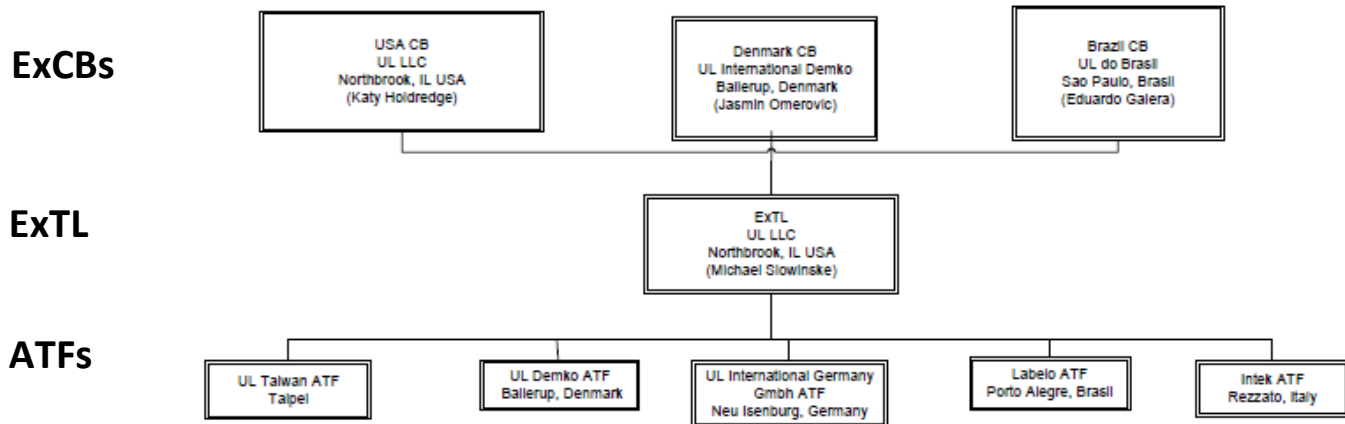


Table 1. History IECEx involvement + latest Assessment Reports

Type of IECEx Body	Organisation Name and location	First accepted in IECEx 02 Scheme	Latest Report (eg re-assessment report)
ExCB	UL LLC Northbrook IL 60062-2096 USA	2002	ExMC/1316/DV
ExCB	UL International DEMKO A/S Ballerup Denmark	2002	ExMC/1314/DV
ExCB	UL do Brasil Sao Paulo Brazil	2016	ExMC/1118/DV
ExTL	UL LLC Northbrook IL 60062-2096 USA	2002	ExMC/1316/DV
ATF	UL Taiwan ATF Taipei Already under control of UL LLC as ExTL	2015	ExMC/992/DV
ATF	UL International DEMKO A/S Ballerup Denmark While a long standing ExTL will now become an ATF under control of UL LLC as ExTL	2002	ExMC/1314/DV



Table 1. History IECEx involvement + latest Assessment Reports

Type of IECEx Body	Organisation Name and location	First accepted in IECEx 02 Scheme	Latest Report (eg re-assessment report)
ATF	UL Frankfurt ATF Zeppelinheim Germany Transfer control of ATF from UL International DEMKO A/S to UL LLC	2015	ExMC/1025/DV
ATF	Intek ATF Rezzato Italy Transfer control of ATF from UL International DEMKO A/S to UL LLC	2015	ExMC/1095/R
ATF (Applicant at this stage)	<i>Labelo ATF</i> <i>Porto Alegre</i> <i>Brazil</i> <i>Currently under IECEx assessment and awaiting acceptance by ExMC</i>		